

BLUEBOX UHF High-Gain Long-Range Antenna



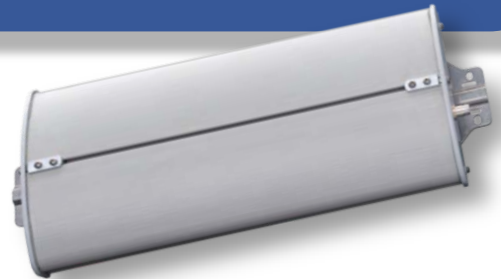
iDTRONIC's BLUEBOX Controller & Antenna family is well suited for industrial and enterprise applications, where reliable, robust and well performing products are needed. All components are designed as a powerful combination for an easy and cost efficient system installation.

iDTRONIC's High-Gain LR Antenna UHF is a high-performance device which can be used in combination with the BLUEBOX UHF Long-Range Controller. It enables the UHF High-Gain reading of up to 10 meters (depending on type of Tag). Through its circular polarized setting, the user will be able to read out the tags in multiple 3D orientations. Thanks to its specification, this UHF High-Gain Antenna can be used for building UHF portals as well.

- Circular polarized
- For dock-door gate solutions
- Easy to integrate with UHF Long-Range Controller
- Able to read out multiple disorientated tags
- Operation RF Frequency range of 865–867 MHz (ETSI) & 902-928 MHz (FCC)

Applications

- Industrial Automation
- Supply Chain
- Asset Tracking
- Portals



Technical Data

Mechanical Specifications

Housing-Material:	PC & Aluminium
Dimensions:	555 × 262 × 59 mm
Protection Class:	IP65

Electrical Specifications

Operating Frequencies:	865 – 867 MHz (EU) 902 – 928 MHz (US)
Operating Distance:	Up to 10 m
Antenna Connector:	TNC-Female
Antenna Gain:	11 dBic
Beam width:	30° / 70°
Axial Ratio:	1 dB
Polarization:	Circular

Environmental Conditions

Operating Temperature:	-20 °C to +55 °C
Humidity:	5 % to 95 %

Supported Transponders

ISO18000-6B
ISO18000-6C
EPC Class 1 Gen 2

Applicable Standards

Radio Regulation:	CE & FCC
-------------------	----------

Order Codes

ETSI: R-IN-UHF-9128U
FCC: R-IN-UHF-9129U